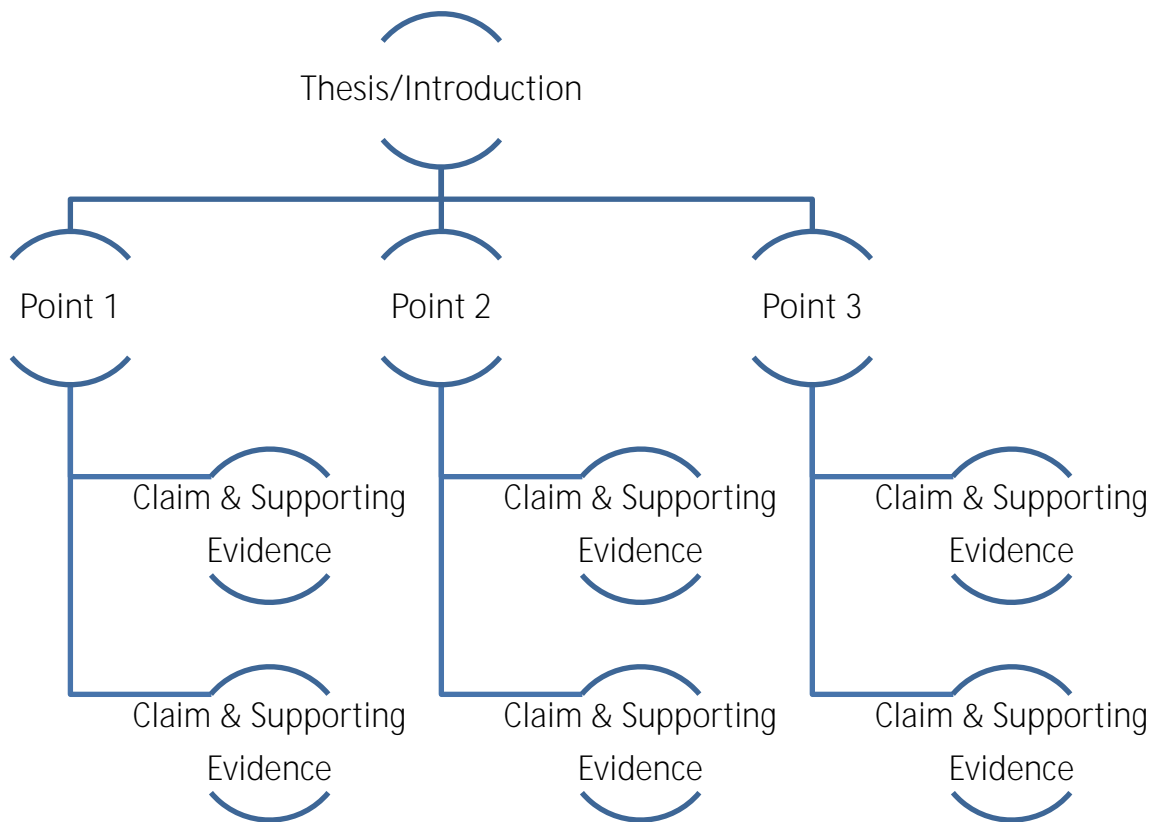




The Learning Centre

Essay Writing **Creating an Essay Outline**

An **essay outline** is an outline that a student creates to plan out his or her essay. Before creating an essay outline, the student must have developed/gathered the following pieces of information: a thesis statement, points and claims to discuss about the thesis statement, and evidence to support these points and claims. The student can then insert these pieces of information into an outline such as this:



*Remember that an essay does not require three paragraphs to make it a good essay. A good essay could have three paragraphs, or seven paragraphs, or however many you choose. What matters is that you use your own informed judgment, based on topic choice, to decide how long to discuss the different points.

Sample Outline (for a 4-6 page paper)

Thesis: I *The Bluest Eye*, the detrimental nature of gender roles is shown through the existing female beauty standards, the application of these beauty standards in female characters' lives, and the consequences on the female characters who neglect these beauty standards.

Introduction (3/4 page)

Part 1: Existing Female Beauty Standards (1 page 1 ½ pages)

Paragraph 1:

Claim: Female beauty standards exist in *The Bluest Eye*

Supporting Evidence: Evidence from the novel or scholarly source that supports the claim

Paragraph 2:

Claim: The existence of these beauty standards shows that gender norms are detrimental

Supporting Evidence: Evidence from the novel or scholarly source that supports the claim

Part 2: Application of Beauty Standards (1 page 1 ½ pages)

Paragraph 1:

Claim: The female characters in *The Bluest Eye* experience beauty standards in their everyday lives

Supporting Evidence: Evidence from the novel or scholarly source that supports the claim

Paragraph 2:

Claim: The existence/application exemplifies the detrimental nature of gender roles

Supporting Evidence: Evidence from the novel or scholarly source that supports the claim

Part 3: Consequences of Rejecting the Beauty Standards (1 page 1 ½ pages)

Paragraph 1:

Claim: Certain female characters in *The Bluest Eye* reject beauty standards

Supporting Evidence: Evidence from the novel or scholarly source that supports the claim

Paragraph 2:

Claim: These female characters face consequences for rejecting beauty standards

Supporting Evidence: Evidence from the novel or scholarly source that supports the claim

Paragraph 3:

Claim: These action-and-consequence scenarios represent the detrimental nature of gender roles

Supporting Evidence: Evidence from the novel or scholarly source that supports the claim

Conclusion (3/4 page)

In your outline, remember to make note of the key sources/page numbers you plan to use in each section.